

OPEN HOUSE

LOS ANGELES CITY COLLEGE • THEATRE ARTS DEPARTMENT

NOVEMBER 1965



OVER 10,000 students have "trod the boards" of the stages at Los Angeles City College. The number of students operating lights and curtains would probably double the number of participants. The Theatre Arts Department has given over 4000 public performances; it has presented 74 original plays, ranging from experimental one-acts to full-fledged musicals; and it has trained hundreds of people for professional careers as actors, technicians, and teachers.

To borrow a line from Thornton Wilder, "How did this all begin?"

Los Angeles City College was started in 1929, using the buildings and site formerly used by UCLA. The Theatre Arts Department was activated with the inception of the school itself, under the chairmanship of Harold Turney, and produced plays in the inherited school auditorium.

In 1931 a Little Theatre was created in what had once been a women's gymnasium. Jerry Blunt, present Chairman, joined Harold Turney, the founder, and together they established the basic philosophy of the department, that the productions themselves form the climax of the student's course, and that the student appear before the public as many times as possible each semester. To that end an extensive system of classes, embracing all phases of the dramatic field, was organized as a part of the regular college curriculum.

During the 1930's and until World War II the department operated two theatres, the Little Theatre and the larger auditorium. Following the war, a third theatre was added which featured central staging. This welcome addition was adapted from a bungalow—a war emergency building—and carried the name Bungalow 16. Plays were alternately scheduled, according to adaptability and needs, into each of these three theatres, giving the student ample opportunity for variation in his stage experience.

In 1959 the large auditorium was razed to make way for the new Administration Building and in 1963 the Little Theatre was razed to make way for the new Theatre Arts Building. The demise of the Little Theatre was not without emotion as it had been the "home" of the Theatre Arts Department for over 32 years and many a student had enshrined it in his memory. Prior to the leveling of the Little Theatre, the Engineering Annex was pressed into service as an "Interim Theatre." Fortunately, it proved to be a most workable playhouse, and the training of students has never slackened.

With the opening of the new Theatre Arts Building, the Theatre Arts Department will, at long last, have a well designed proscenium theatre, a flexible theatre, and a class room theatre to accommodate the activities of the department.

Through the years, students have come in a steady stream to the Theatre Arts Department of Los Angeles City College to receive an education on the college level which emphasizes the practical application of all academic class work. The faculty also increased, until today the staff numbers 14; 6 full-time Theatre Arts teachers, 5 part-time Theatre Arts teachers, 2 full-time teaching assistants, and a full-time secretary.

During the 37 years of its existence and growth, the Theatre Arts Department has had the solid support of the Administration, the Student Body, and the Community, until it is now one of the best known and respected theatrical institutions in the United States.

DEMONSTRATION AREAS

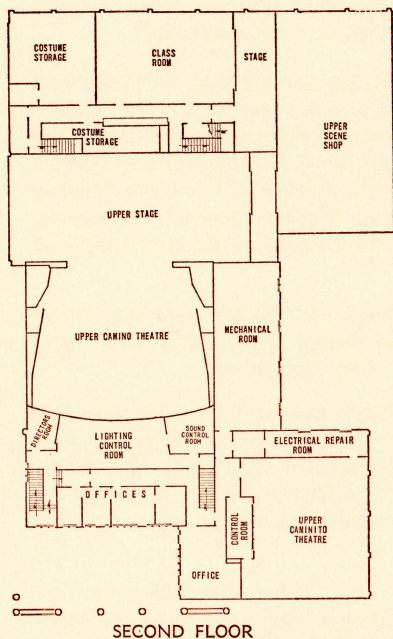
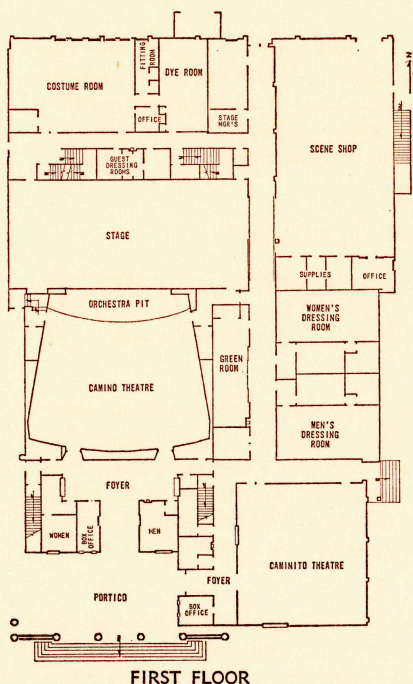
- **CAMINO THEATRE**
Advanced Acting
Presentations every 15 minutes
- **CAMINITO THEATRE**
Intermediate Acting
Presentations every 15 minutes
- **CAMEO THEATRE (CLASS ROOM)**
Beginning Acting
Presentations every 15 minutes

- **SCENE SHOP**
Scenery Construction

- **WOMEN'S DRESSING ROOM**
Make up
- **COSTUME ROOM**
Costume Construction and Display
- **STAGE MANAGER'S ROOM**
Stagecraft Display

OPEN FOR VIEWING

- **CONTROL ROOMS**
- **COSTUME STORAGE**
- **CAMINO THEATRE STAGE**



THEATRE ARTS DEPARTMENT FACULTY

BEVERLY BAKER

JERRY BLUNT

MAY ROSE BORUM

ELLEN ALBERTINI DOW (ON SABBATICAL)

JANE HAWKINS

JOHN INGLE

JAMES R. MC CLOSKEY

S. BARRY MC GEE

NORMAN MENNES

ALICE PARICHAN

BARBARA BURNETT, SCENE SHOP MANAGER

JUDY LEVITT, COSTUME ASSISTANT

CONSTANCE ENSIGN, SECRETARY, PUBLIC RELATIONS
